



701½ West First Street  
Defiance, OH 43512  
Phone 419-782-6211  
architects@beilharzinc.com

November 30, 2017

**BRYAN CITY SCHOOLS**  
**Administrative Office Renovations**  
Bryan, Ohio

B7-4565

## **ADDENDUM NO. 2**

This Addendum becomes a part of the Contract Documents and modifies them only to the extent herein set forth. Each prime bidder is responsible for distribution of information conveyed by this Addendum to its subbidders and suppliers.

Attachments: Bid Question Log No. 2  
Sketches: C-1b, A-1a  
Sheet: M-1

### **ITEM NO. 1: Section 09 5100 Acoustical Ceilings**

Revise paragraph 2.02.C to the following:

- C. Abuse Resistant Panels (Type A): ASTM E1264, Type III, Form 2; 24 x 48 inches, ¾ inch thick; impact resistant. (Armstrong School Zone **Georgian 795**; CertainTeed School Board SB-197; USG Radar 2407)

### **ITEM NO. 2: Section 23 0923 – Direct Digital Control Systems**

Add paragraph 1.04.C: Radiant Metal Ceiling Panels: Interconnect with wall mounted low voltage thermostats to lock out ceiling panels when RTU-A is in unoccupied mode.

### **ITEM NO. 3: Sheet C-1 – Site Plan**

See attached sketch C-1b for revised location of temporary office trailer. Disregard trailer foundation detail issued under Addendum 1. Locate trailer on existing asphalt parking lot. Protect asphalt surface by placing ABS pads under all CMU supports. Patch asphalt at all tie-down locations following trailer removal.

### **ITEM NO. 4: Sheet A-1 – Floor Plan**

See attached sketch A-1a for Building Code Requirements schedule.

### **ITEM NO. 5: Sheet M-1 – HVAC Plan**

See attached sheet M-1 for revisions to ductwork.

END OF ADDENDUM



701½ West First Street  
Defiance, OH 43512  
Phone 419-782-6211  
architects@beilharzinc.com

November 30, 2017

**BRYAN CITY SCHOOLS**  
**Administrative Office Renovations**  
Bryan, Ohio

B7-4565

### **BID QUESTION LOG #2**

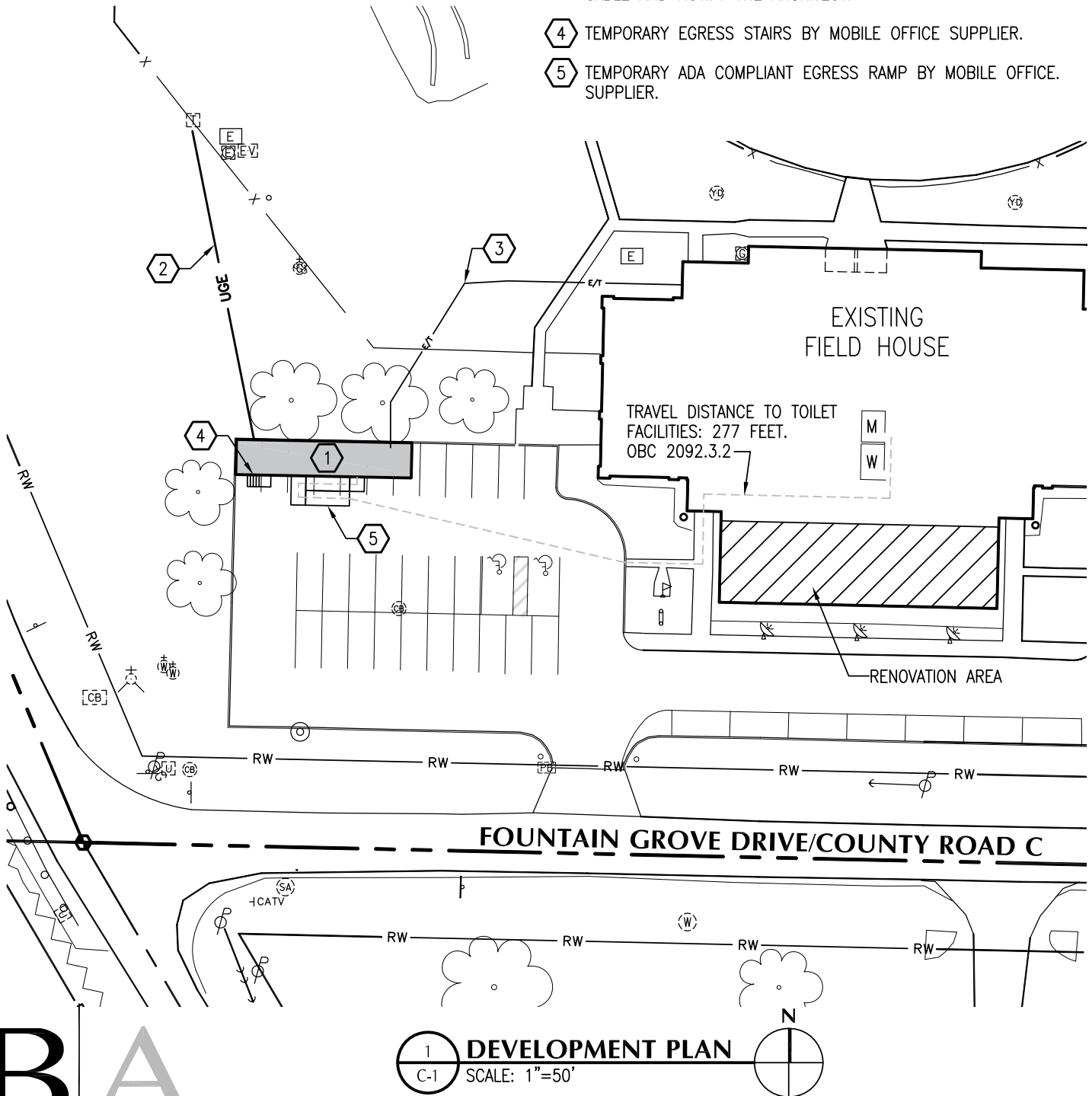
The following questions and answers are distributed for supplemental information and clarification, and are not part of the Contract Documents. Questions answered by Addendum items are not necessarily repeated in this document.

- Q15. Are the radiant ceiling panels in the HVAC or Electrical Package?  
A. See section 01 1000, paragraph E.2.
- Q16. Is the thickness of the acoustical insulation equivalent to the stud size only, or should it include the thickness of the isolation clips and furring?  
A. Insulation thickness is noted on detail 2 (Wall Types), on sheet A-2.
- Q17. Is all wood blocking required to be fire treated?  
A. Yes.
- Q18. Are all new walls, including finishes, to be extended to the sub-ceiling?  
A. See wall legend on sheet A-2 (which applies to all new walls). Level 2 drywall finish is acceptable above finished ceilings.

END OF BID QUESTION LOG #2

## KEYNOTE LEGEND

- 1 TEMPORARY 60'x12' MOBILE OFFICE TRAILER.
- 2 TEMPORARY UNDERGROUND 120/240v ELECTRICAL SERVICE FROM EXISTING TRANSFORMER/METER TO OFFICE TRAILER. 150AMPS, (3)#1/0 WITH #6 GROUND IN 1 1/2" CONDUIT.
- 3 TEMPORARY 3/4" CONDUIT (ON SURFACE), TO EXISTING PULL BOX MOUNTED ON EXTERIOR OF BUILDING WALL. EXTEND INTO TRAILER, VERIFY LOCATION OF TERMINATION IN TRAILER PRIOR TO BEGINNING WORK. THE OWNER WILL BE PROVIDING A PER-TERMINATED FIBER OPTIC CABLE. CONTRACTOR TO DETERMINE LENGTH OF NEEDED CABLE AND NOTIFY THE ARCHITECT.
- 4 TEMPORARY EGRESS STAIRS BY MOBILE OFFICE SUPPLIER.
- 5 TEMPORARY ADA COMPLIANT EGRESS RAMP BY MOBILE OFFICE SUPPLIER.



1 DEVELOPMENT PLAN  
C-1 SCALE: 1"=50'

## BUILDING CODE REQUIREMENTS

Building Code	2017 OBC
Use Groups (existing, no change)	A3, B, S1
Construction Type (existing, no change)	II-B
Building Area 1 (Use Groups A3, S-1) No Work	
First Floor - Existing	16,104 SF
First Floor - Additions	0 SF
Total First Floor	16,104 SF
Building Area 2 (Use Group B) Renovation	2,373 SF
Building Height	30 ft

VENTILATION SCHEDULE									
ROOM	AREA	OCCUPANTS		OUTDOOR AIR CFM			NOTES		
		SQ FT	PER KSF	TOTAL	PER OCC	PER SF			
101	188	30	6	5	0.06		39		
104	183	5	1	5	0.06		16		
105	135	5	1	5	0.06		11		
108	80	5	0	5	0.06		7		
109	77						5		
111	80	5	0	5	0.06		7		
114	135	5	1	5	0.06		11		
RTU-A Total				9			96	1	
102	103	50	5	5	0.06		32		
103	271						16		
106	123	5	1	5	0.06		10		
107	80	5	0	5	0.06		7		
110	80	5	0	5	0.06		7		
112	76	70	5	8	0.18		56		
113	122	5	1	5	0.06		10		
RTU-B Total				12			139		
				9	System Population		100	1	
115	496	50	25	5	0.06		154		
RTU-C Total							154	1	
NOTES LEGEND									
1 Refer to Rooftop Unit Schedule for system outdoor airflow									

ROOFTOP UNIT SCHEDULE																
MARK	MFR	MODEL	TYPE	HEATING		AFUE	COOLING			BLOWER		ELECTRICAL			NOTES	
				MBH			MBH		SEER	TOTAL	CFM	V	PH	AMPS		FUSE
				IN	OUT		TOTAL	SENS		TOTAL	OUTDOOR					
RTU-A	Johnson Controls	J03ZF	Nat. Gas	50	40	80.9	43	25	13	1144	127	208	3	19.7	35	1,2
RTU-B	Johnson Controls	J03ZF	Nat. Gas	50	40	80.9	43	25	13	1167	127	208	3	29.9	35	
RTU-C	Existing	-	Nat. Gas	50	40	80.9	40	22	13	900	208	208	3	19.7	35	
NOTES LEGEND																
1     Roof curb, provide to General Contractor for installation																
2     110V receptacle powered by unit mounted transformer																

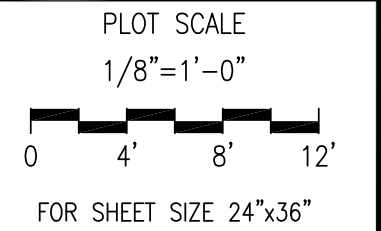
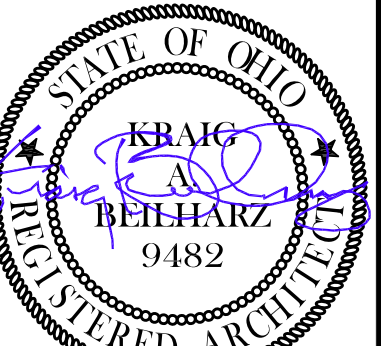
DIFFUSER, REGISTER AND GRILLE SCHEDULE														
MARK	TYPE	MOUNTING	SIZE		CFM	SP	NC	DAMPER	FINISH	PATTERN	NOTES			
			PANEL	NECK										
A	Supply	T-Bar	24x24	6" Diam.	120	.04	15	Yes	White	4-Way				
B	Supply	T-Bar	24x24	8" Diam.	250	.05	15	Yes	White	4-Way				
C	Supply	T-Bar	24x24	10" Diam.	350	.06	17	Yes	White	4-Way				
R	Return	Surface	10x10	-	120	.02	15	No	White	45° Defl.				
S	Return	Surface	12x12	-	180	.02	15	No	White	45° Defl.				
T	Return	Surface	14x14	-	250	.03	15	No	White	45° Defl.				

HVAC GENERAL NOTES

EXISTING BUILDING INFORMATION IS COMPILED FROM RECORD DRAWINGS AND PHOTOS, AND REPRESENTS APPROXIMATE EXISTING CONDITIONS. NOT ALL EXISTING COMPONENTS MAY BE SHOWN. FIELD VERIFY EXISTING CONDITIONS AND LOCATIONS PRIOR TO BIDDING TO CONFIRM REQUIRED SCOPE OF WORK.

SYMBOLS LEGEND

- REMOVE EXISTING DUCT OR COMPONENT
- ✕ REMOVE EXISTING SUPPLY DIFFUSER
- ✕ REMOVE EXISTING RETURN GRILLE
- ⊖ REMOVE EXISTING THERMOSTAT
- ⊕ A-## NEW SUPPLY DIFFUSER  
SUPPLY CFM  
MARK, SEE SCHEDULE
- Ⓡ NEW RETURN GRILLE, SEE SCHEDULE FOR SIZE
- / BALANCING DAMPER
- ⊙ SPACE TEMPERATURE SENSOR



ISSUE DATE	
1	11-14-17 PERMITS AND BIDS
2	11-30-17 ADDENDUM 2

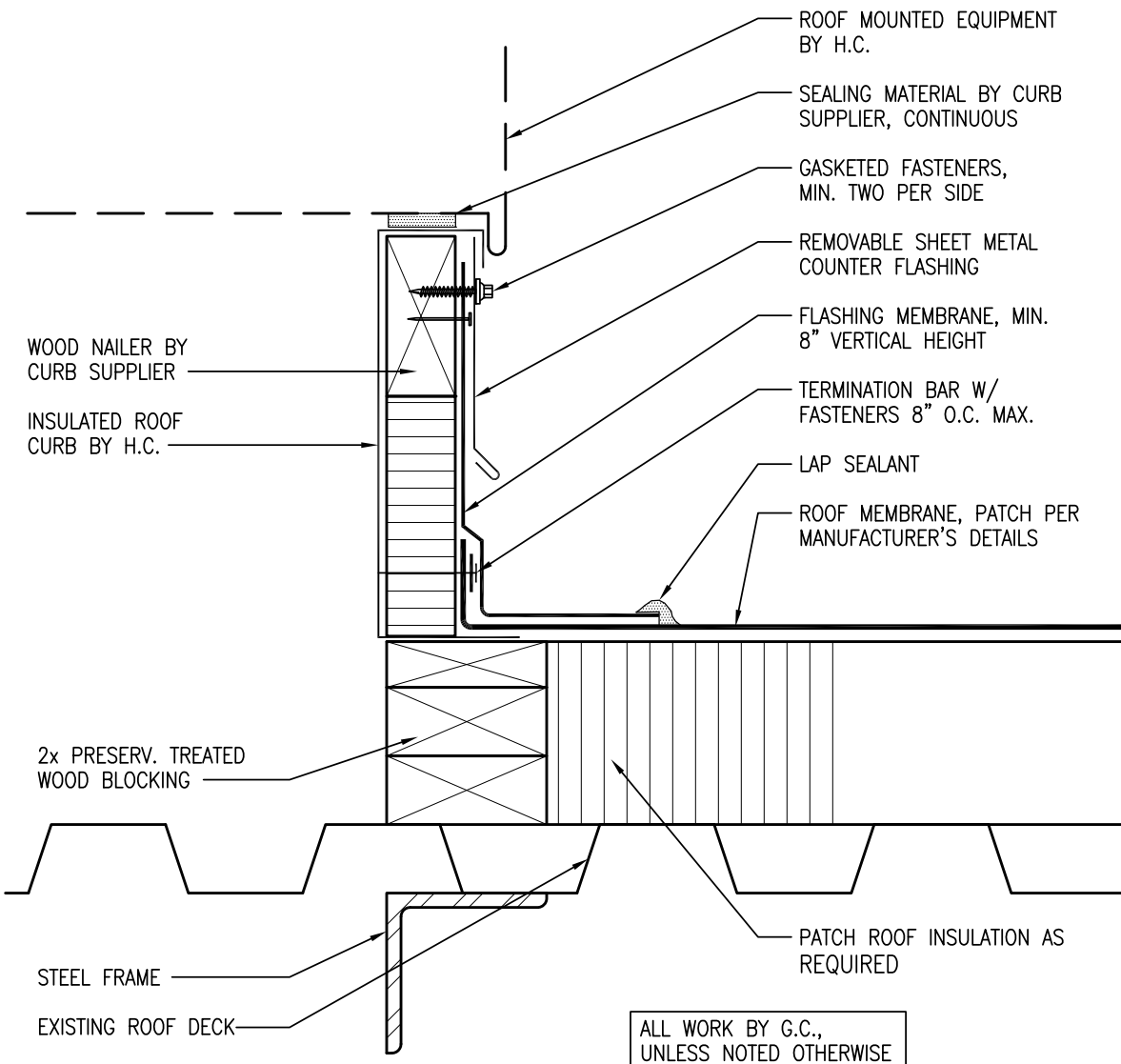
© 2017 BEILHARZ ARCHITECTS, INC.  
THE CONTENT OF THIS DRAWING IS NOT INTENDED TO BE SUITABLE FOR USE OR REUSE BY INDIVIDUALS, COMPANIES, CORPORATIONS, OR OTHER ENTITIES FOR ANY PURPOSE OTHER THAN THE INTENDED PURPOSE OF THIS DOCUMENT, NOR FOR USE ON ANY OTHER PROJECT. ANY REUSE OR REPRODUCTION WITHOUT WRITTEN VERIFICATION AND APPROVAL BY THE ARCHITECT FOR THE SPECIFIC PURPOSE INTENDED SHALL BE AT THE USER'S SOLE RISK AND WITHOUT LIABILITY OR LEGAL EXPOSURE TO THE ARCHITECT.

DEMOLITION KEYNOTE LEGEND

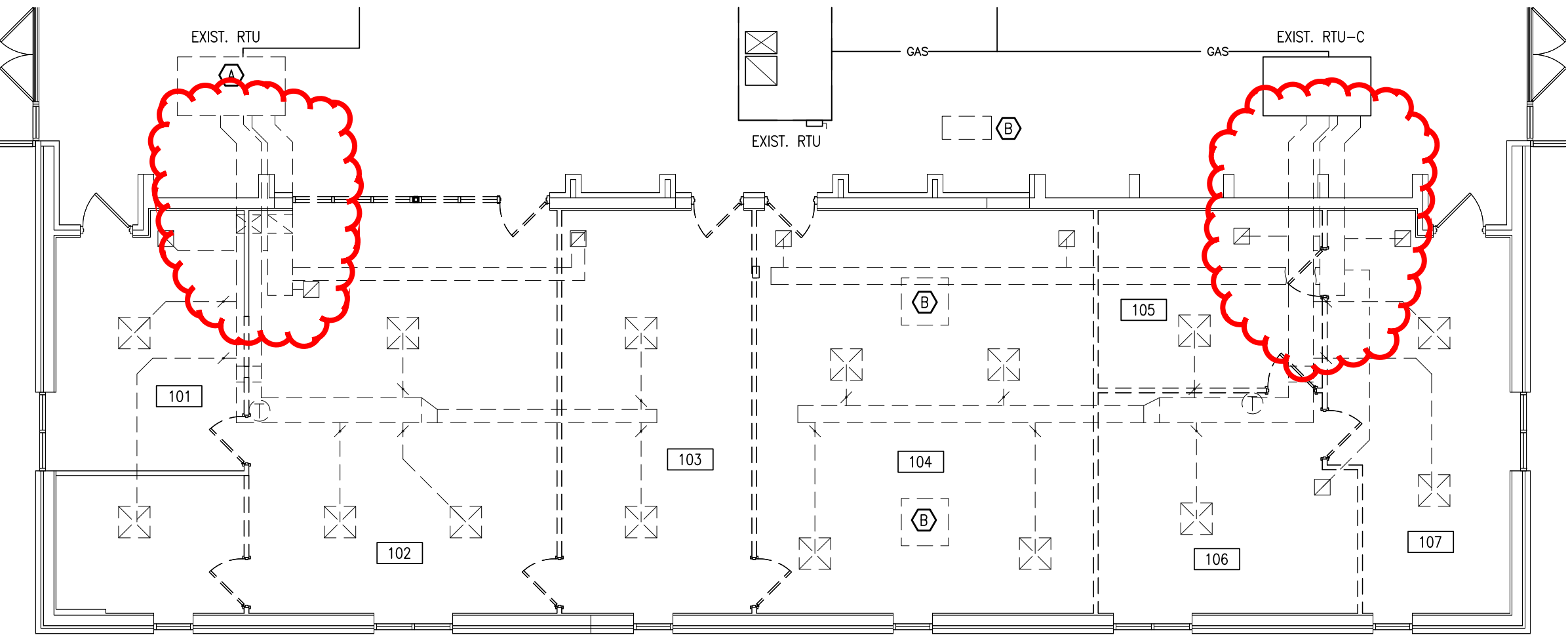
- Ⓐ REMOVE EXISTING ROOFTOP UNIT. UTILIZE EXISTING CURB, GAS PIPING AND ELECTRICAL CONNECTIONS FOR NEW UNIT, MODIFY AND PROVIDE ADAPTERS AS REQUIRED. EXISTING CONVENIENCE RECEPTACLE AND LIGHT TO REMAIN.
- Ⓑ REMOVE EXISTING SPLIT SYSTEM, CAPTURE REFRIGERANT, AND TURN EQUIPMENT OVER TO THE OWNER. PATCH ROOF AND WALL PENETRATIONS WEATHERTIGHT.

KEYNOTE LEGEND

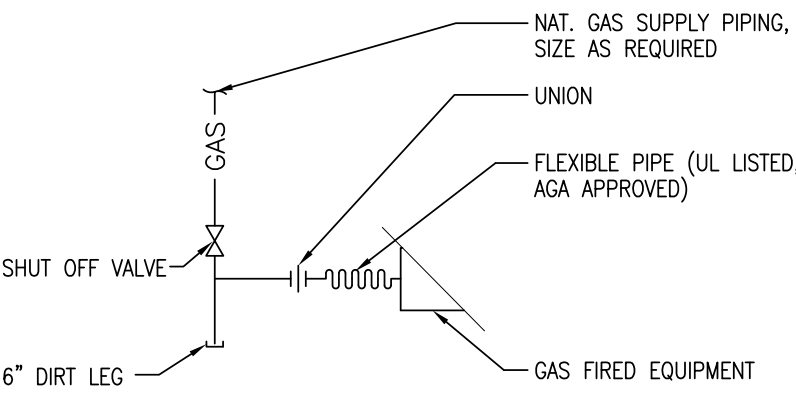
- ① HORIZONTAL DUCT ABOVE ROOF, INSULATED FOR EXTERIOR EXPOSURE WITH 2" THICK FIBERGLASS DUCTBOARD AND "VENTURE-GLAD" WATER-PROOF COVERING. WALL OPENING AND FLASHING BY GENERAL CONTRACTOR. UTILIZE EXISTING OPENINGS AT RTU-A & C.
- ② DUCT DROP FROM TRUSS SPACE TO AREA BETWEEN SUBCEILING AND SUSPENDED CEILING. PATCH SUB-CEILING AT DUCT PENETRATIONS.
- ③ CONNECT NEW UNIT TO EXISTING GAS PIPING, SEE DETAIL 4/M-1; FIELD VERIFY
- ④ CONNECT NEW UNIT TO EXISTING GAS PIPING, SEE DETAIL 4/M-1; FIELD VERIFY



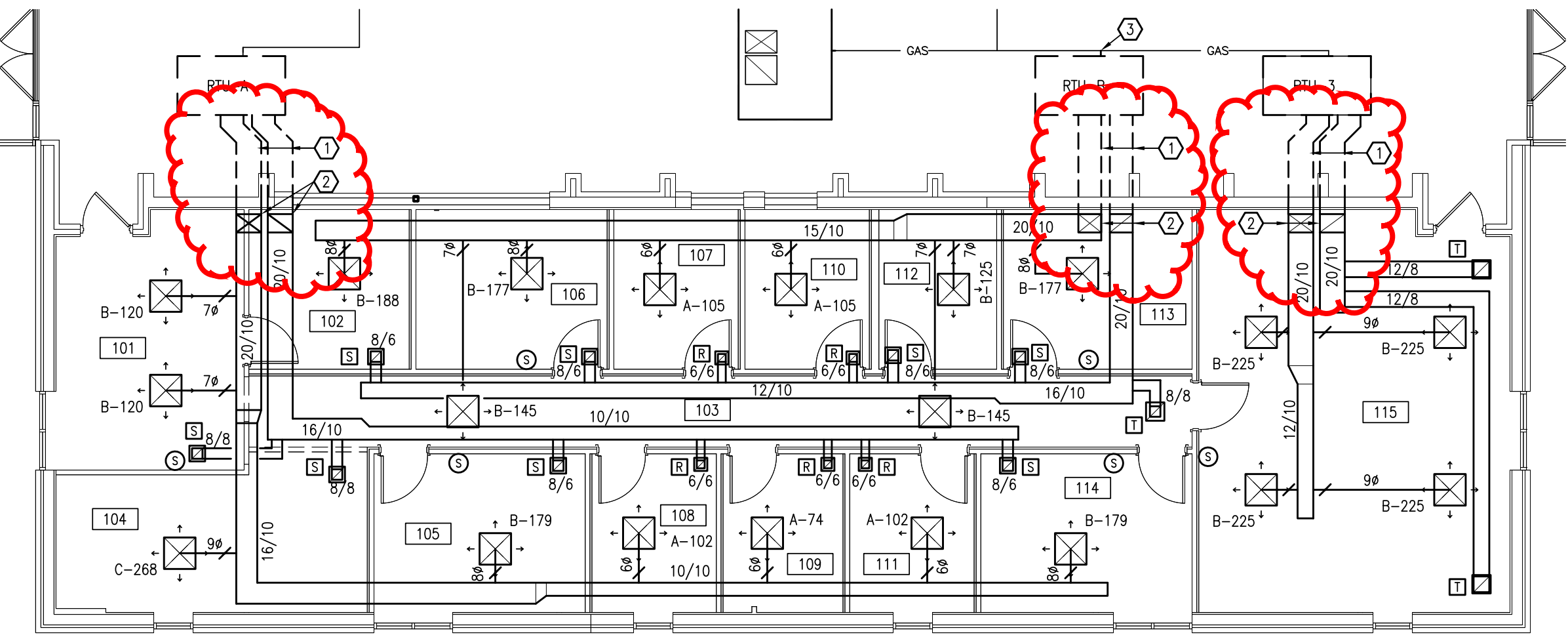
3 ROOF MOUNTED EQUIPMENT CURB DETAIL  
SCALE: 3/4"=1'-0" NRCA TP-125



1 HVAC DEMOLITION PLAN  
SCALE: 1/8"=1'-0"



4 TYPICAL GAS CONNECTION  
SCALE: NONE



2 HVAC PLAN  
SCALE: 1/8"=1'-0"

ADMIN. OFFICE RENOVATIONS  
BRYAN CITY SCHOOL DISTRICT  
1350 FOUNTAIN GROVE DRIVE  
BRYAN, OHIO 43506

HVAC PLAN

PROJECT: B7-4565

DRAWN BY: LJR

CHECKED BY: KAB

SHEET

M-1

7 OF 8